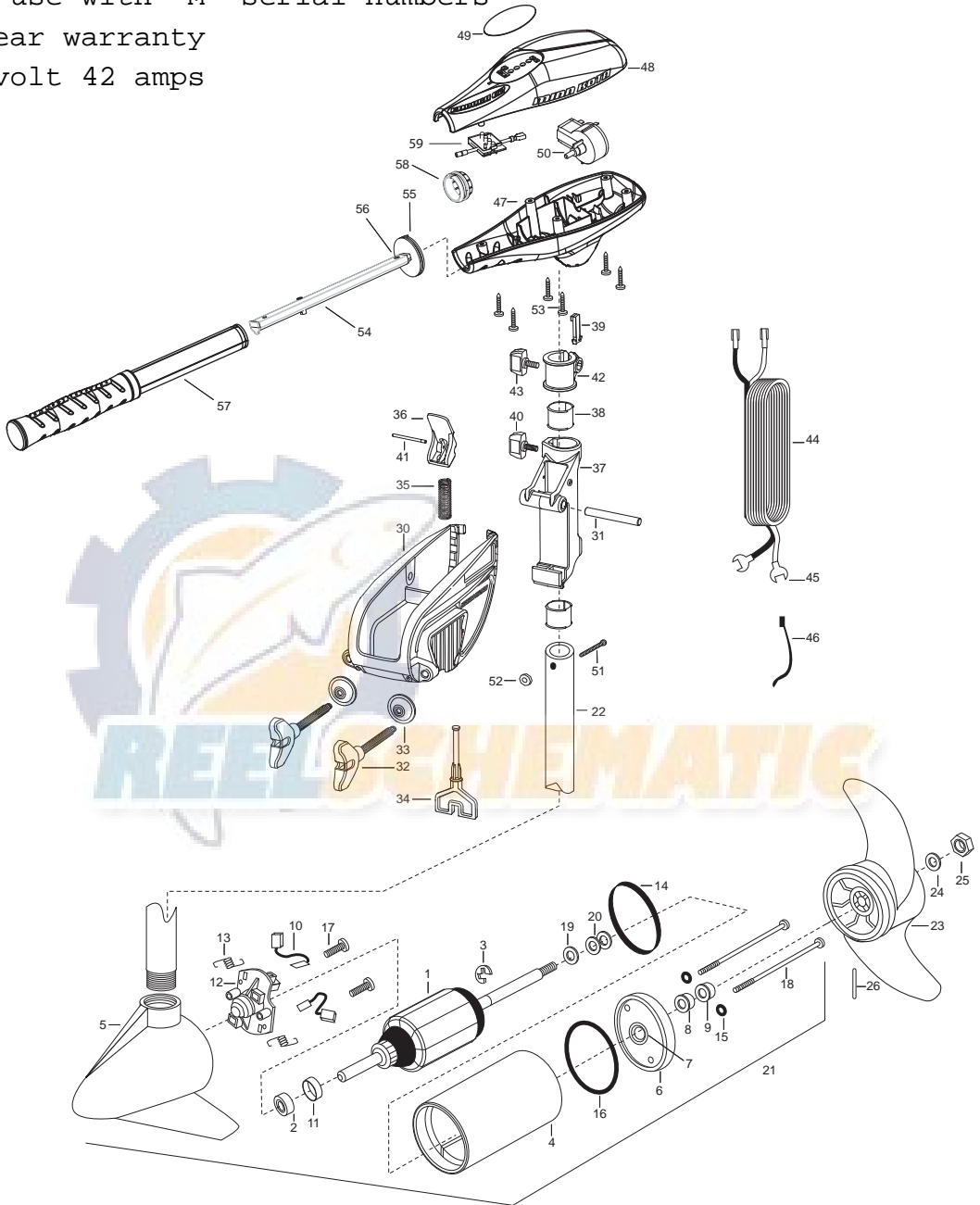


ENDURA 50 (international) PARTS DIAGRAM

for use with "M" serial numbers

2-year warranty

12-volt 42 amps



ENDURA 50 (36" & 42") PARTS LIST

| <u>Item</u> | <u>Part Number</u> | <u>Description</u> |
|-------------|--------------------|---|
| 1 | 2-100-121 | ARMATURE ASSEMBLY 12v 3.62 |
| 2 | 140-010 | BEARING- BALL |
| 3 | 788-015 | RETAINING RING |
| 4 | 2-200-101 | CENTER HOUSING ASSEMBLY- |
| 5 | 2-300-196 | BRUSH END HOUSING ASSEMBLY 3.62 SPCO 36" |
| | 2-300-195 | BRUSH END HOUSING ASSEMBLY 3.62 SPCO 42" |
| 6 | 2-400-101 | PLAIN END HOUSING ASSEMBLY |
| 7 | 144-049 | BEARING- FLANGE, SERVICE ONLY |
| 8 | 880-003 | SEAL |
| 9 | 880-006 | SEAL WITH SHIELD |
| 10 | 188-036 | BRUSH ASSEMBLY [2.EA] |
| 11 | 725-050 | BRUSH RETENTION- PAPER TUBE |
| 12 | 738-036 | BRUSH PLATE WITH HOLDER |
| 13 | 975-040 | SPRING-TORSION [2.EA] |
| 14 | 337-036 | GASKET |
| 15 | 701-008 | O-RING [2.EA] |
| 16 | 701-081 | O-RING |
| 17 | 830-007 | SCREW- # 8-32 [2.EA] |
| 18 | 830-042 | THRU BOLT 10-32X8.83 [2.EA] |
| 19 | 990-067 | WASHER- STEEL THRUST |
| 20 | 990-070 | WASHER- NYLATRON [2.EA] |
| 21 | 2097035 | MOTOR ASSEMBLY 12V 3.62 5SPC FW 36" |
| | 2097036 | MOTOR ASSEMBLY 12V 3.62 5SPC FW 42" |
| 22 | 2032052 | TUBE COMPOSITE 36" |
| | 2032053 | TUBE COMPOSITE 42" |
| ■ | 1378170 | PROPELLER KIT |
| 23 | 2091170 | PROP, POWER 3-5/8" |
| 24 | 2151726 | WASHER- 5/16 STD SS |
| 25 | 2053101 | NUT- NYLOC 5/16 |
| 26 | 2092600 | PIN-DRIVE |
| ■ | 2771818 | BRACKET & HINGE ASSEMBLY (INCLUDES 30-41) |
| ■ | 2771910 | BRACKET ASSEMBLY (INCLUDES 30, 32, 33) |
| *30 | 2061910 | BRACKET |
| 31 | 2060510 | PIN-HINGE |

PARTS LIST (cont.)

| <u>Item</u> | <u>Part Number</u> | <u>Description</u> |
|-------------|--------------------|--|
| ■ | 2881300 | SCREW-CLAMP, WASHER, RETAINER KIT [2.EA] |
| *32 | 2061300 | SCREW-CLAMP [2.EA] |
| *33 | 2011710 | WASHER-CLAMP [2.EA] |
| 34 | 2063605 | T-BAR, PLASTIC |
| 35 | 2062706 | SPRING- T-BAR |
| 36 | 2067201 | LEVER- TILT BLACK |
| 37 | 2061810 | HINGE-PLASTIC |
| 38 | 2037301 | BUSHING-HING [2.EA] |
| 39 | 2062800 | TENSION BLOCK-SNAP IN |
| 40 | 2011385 | SCREW, TENSION/KNOB |
| 41 | 2060515 | PIN, TILT LEVER |
| 42 | 2061520 | COLLAR-DEPTH |
| 43 | 2011365 | SCREW-COLLAR/NEW KNOB |
| 44 | 2020631 | LEADWIRE (10 GA) FLAG/PIGGYBACK |
| 45 | 2020702 | SPADE TERMINAL 10GA. [2.EA] |
| 46 | 2026300 | TIE WRAP [2.EA] |
| 47 | 2062515 | CONTROL BOX |
| 48 | 2060215 | CONTROL BOX COVER |
| 49 | 2065724 | DECAL COVER ENDURA C2 50 BATTERY METER |
| 50 | 2064028 | SWITCH-FWD/REV 5 SP |
| 51 | 2033401 | SCREW-10-24 X 1-3/4 |
| 52 | 2013110 | NUT-10-24 HEX |
| 53 | 2012100 | SCREW-8-18 X 5/8 [6.EA] |
| 54 | 2990919 | INNER HANDLE ASSEMBLY |
| 55 | 2060405 | PIVOT, HANDLE |
| 56 | 2012102 | SCREW |
| 57 | 2990928 | OUTER HANDLE ASSEMBLY |
| 58 | 2060009 | FRONT BEARING |
| 59 | 2074070 | BATTERY METER 12V |
| ■ | 2888460 | O-RING, GASKET SEAL KIT |

* This item is part of an assembly. This item cannot be sold separately due to machining and/or assembly that is required.

WIRING DIAGRAM

